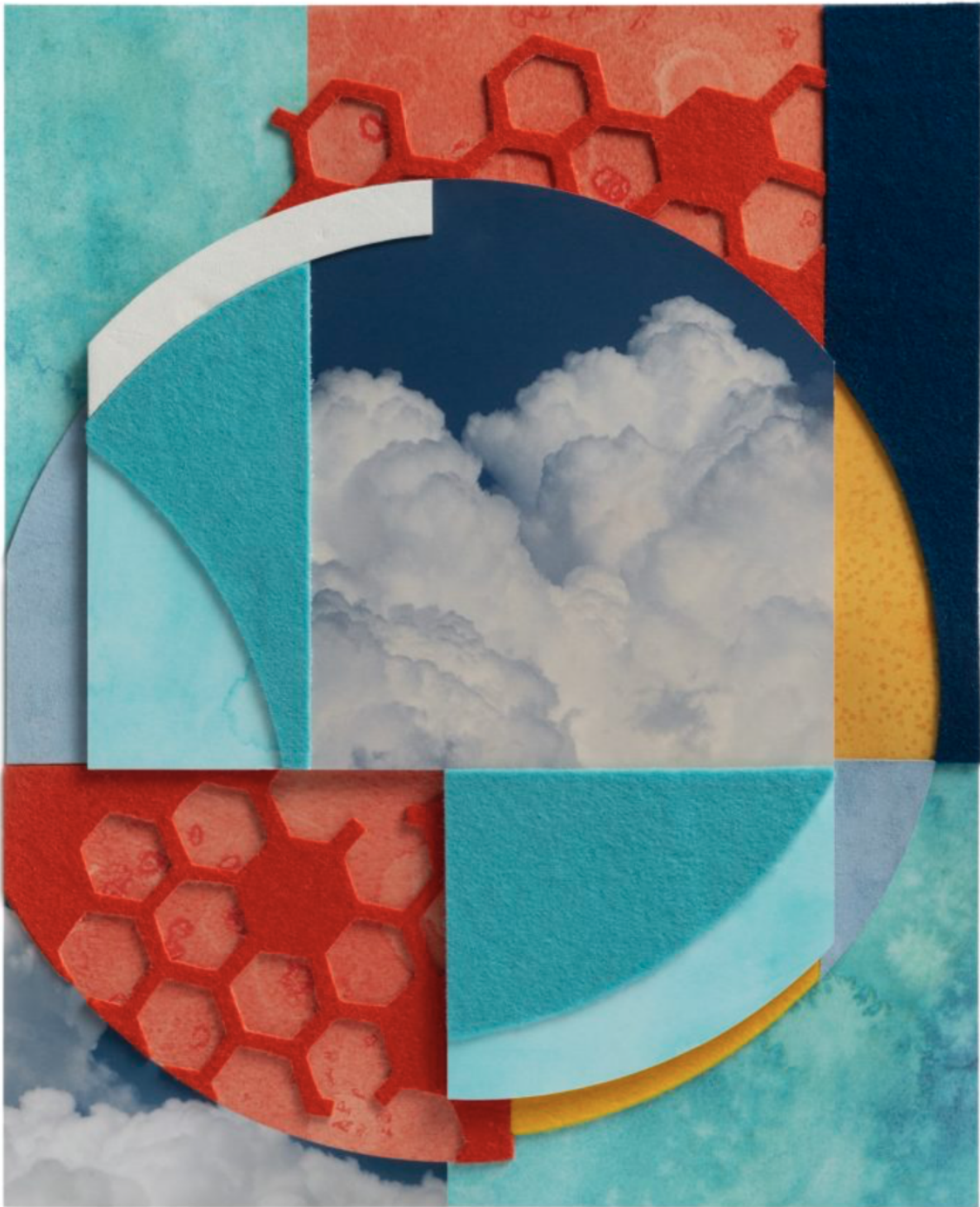


San Antonio



Constance Lowe, *Drift Threshold #2 (Gold Hem With Salt)*, 2021, Archival inkjet prints, wool, felt, and leather, 16 x 13 in, 40.6 x 33 cm

Ruiz-Healy Art Celebrates its Quinceañera

Patricia Ruiz-Healy's Olmos Park gallery celebrates its 15th year with an exhibition, open Nov. 18-Jan. 29

BY Kathleen Petty

Published: [November 19, 2021](#)

The anniversary celebration at Ruiz-Healy Art this Saturday may not look much like a traditional quinceañera, but founder Patricia Ruiz-Healy says they're joyously celebrating 15 years all the same.

"We're excited to have 15 years of the gallery program, and this is a great show," says Ruiz-Healy.

Speaking during a walkthrough of the anniversary exhibition, Ruiz-Healy said she curated the show, *Ruiz-Healy Art: Quinceañera*, to feature the work of 17 artists who have been critical to the Olmos Park gallery's history, including many with roots in San Antonio. An open house celebration is planned from noon to 3 p.m. on Saturday, Nov. 20, and the gallery is open for walk-in guests from 11 a.m. to 4 p.m. each Wednesday through Saturday (and by appointment on other days). The exhibit is on display Nov. 18-Jan. 29.

Ruiz-Healy first opened her contemporary art business in 2004, meeting with artists in her native Mexico and in Argentina before expanding to working with artists in San Antonio and across the U.S. and the world. The gallery in Olmos Park debuted in 2006 and Ruiz-Healy and her daughter, Patti, opened a second gallery in New York City in 2019. Both focus on Latinx, Latin American and Texas contemporary artists. Ruiz-Healy says featuring female artists has also been an important focus for her when curating exhibits throughout the gallery's history.



Chuck Ramirez, Brooms_ Escoba Verde, 2007, Pigment Inkjet Print, 24.5 x 20 in, 62.2 x 50.8 cm,
Edition of 6

Some of the artists featured in the *Quinceañera* exhibition have been working with Ruiz-Healy since her gallery opened, while others are more recent finds. Visitors will see work by well-known San Antonio artists like Chuck Ramirez and Ethel Shipton, as well as by other prominent artists, including renowned Mexican photographer Graciela Iturbide.

Inside the doors of the small gallery, guests are greeted with drawings by Nate Cassie, who came to San Antonio to earn an MFA at UTSA and stayed to work here after graduating. Constance Lowe, a retired UTSA professor who Ruiz-Healy met while studying there, is also featured toward the entrance of the gallery. Her mixed media pieces incorporate landscape photography with felt and bright colors and are an abstraction of the Midwestern farm fields she grew up around. “This is the kind of work you have to see in person,” Ruiz-Healy said, pointing toward the multiple dimensions of Lowe’s pieces.

Jennifer Ling Datchuk, a San Antonio-based artist who grew up on the East Coast and was named a 2020 United States Artists fellow and a 2021 Texas State Artist, explores her Asian heritage in her art which is featured in a nook of the gallery, where guests will also find two moving photographs by Iturbide.

On another wall, San Antonio artist Jesse Amado utilized painted chicharron, felt and acrylic to provide an abstract commentary on the border while fellow San Antonio artist Leigh Anne Lester shares a piece that explores the genetic modification of plants using graphite, acrylic paint and linen tape.

Ruiz-Healy splits her time between Texas and New York now but says it’s a true honor to get to celebrate the gallery and business in the town where it all started.



Graciela Iturbide, *Eyes to Fly With*, Coyoacán, Mexico, 1991, Silver Gelatin Print,
14 x 11 in, 35.6 x 27.9 cm